

Where Comfort is Essential



800 lb Weight
Capacity
(363 kg)

Seat width: 27" (68 cm) 33" (83 cm) with arm width adjustment
Adjustable seat depth: 21" or 23" (53 cm or 58 cm)
Adjustable seat height: 21" or 23" (53 cm or 58 cm)
Backrest length: 26" (65 cm)

Because Broda understands the challenges of Bariatric care, we have addressed many of these challenges with the uniquely superior Bari 385

✓ Weight Capacity

- **800 lb (363 kg) capacity** enables bariatric patients to leave their bed for shower and commode needs
- Heavy-duty frame and casters ensure **safety and durability**

✓ Safe Positioning and Patient Handling

- Infinitely adjustable tilt, recline and elevating legrest helps **reduce the risk of falls** and helps patients feel secure and comfortable
- Anterior tilt works as a stand-assist
- Lower back concavity **accommodates patient's Gluteal Shelf**

✓ Shower and Commode Functions

- Unique recline feature opens mid-section for ease of cleaning hard to reach abdominal areas
- Open front commode seat facilitates **peri cleaning**

✓ Easy Maneuverability

- 4 total lock swivel casters and 2 locking middle wheels allow chair to be easily pushed and permits **turning in tight corners without lateral drifting**
- Patient weight is concentrated primarily over middle wheels in upright chair position for safe and easy maneuvering

Standard Features

- 800 lb (363 kg) weight capacity
- 14° posterior tilt
- 8° anterior tilt
- 65° back recline
- Comfort Tension Seating™
- 33" or 39" overall width (83 cm or 98 cm)
- Elevating and length adjustable legrest
- Flip up footrest
- Four 5" total lock stainless steel casters
- Two 8" stainless steel middle wheels
- Emergency hand and/or foot operated middle wheel brake
- Stainless steel frame with drainage holes
- Removable, adjustable armrests
- Urethane foam commode seat with front opening
- Commode pan and basket



14° Posterior tilt



8° Anterior tilt



65° Back recline

Width adjustable armrests accommodate widths up to 33"



Open front commode seat facilitates peri cleaning



3 Chairs in One!

Optional Transport Seat

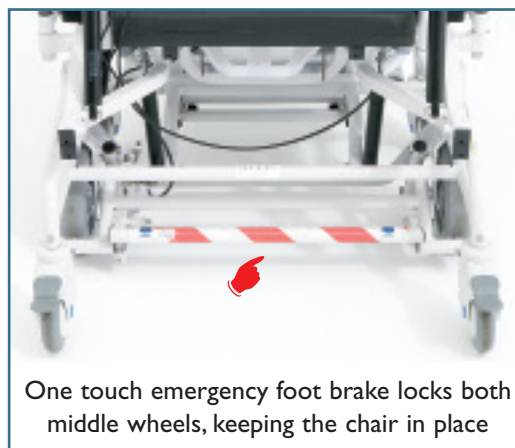
The Bari 385 is 3 chairs in one

- Commode Chair
- Shower Chair
- Transport Chair – with the option of our easily interchangeable transport seat

Infinite positioning options and easy maneuverability make the Bari 385 excellent for patient transport within a facility.



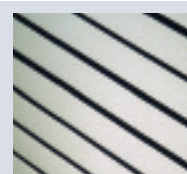
Removable arms assist with side transfers



One touch emergency foot brake locks both middle wheels, keeping the chair in place

Broda's Comfort Tension Seating™

- Conforms to patient for comfort and pressure reduction
- Anti-bacterial & anti-fungal
- Easy to clean



Safety and Durability - Up to 800 lbs!

Broda has conducted numerous tests in order to determine not only the weight capacity of the Bari 385, but also to ensure that the stability, static strength and life cycle durability of the chair are sufficient to provide optimum safety and functionality in even the most extreme cases.

Custom Bariatric Seating

Broda offers a range of custom bariatric seating to accommodate various patient needs and sizes.

- Accommodate difficult to seat patients who need full positioning as well as patients who are self mobile
- 16 gauge tubular steel frame ensures durability and safety

Custom Bariatric Sizes include:

Seat widths: 22", 24", 26", 28"

(55 cm, 60 cm, 65 cm, 70 cm)

Seat depths: 18.5", 20" (17" standard)

(46 cm, 50 cm, 43 cm standard)

Back lengths: 33.5", 35", 36", 38", 40" (32" standard)

(84 cm, 88 cm, 90 cm, 95 cm, 100 cm, 80 cm standard)

For other custom requests, please contact Broda.



Model 785 28" Seat width

- 38° seat tilt, 90° recline
- Removable arms assist with transfers

Pedal Chair 26" Seat width

- 18° seat tilt
- Encourages self mobility