




**Parts Required:** Mag Wheels  
 Brakes  
 Brake Rods  
 Mounting Bracket  
 Anti Tippers

**Tools Used:** 7/16" Wrench  
 Screw Driver  
 Rubber Mallet  
 5/8" Wrench  
 5mm Allen Wrench

Step	Execution	Figures
1	Remove front 5" total lock casters and rear 5" fixed casters, using a 7/16" wrench loosen the 1/4" nylon locknut and remove the hexcap screw from the caster post. If casters are difficult to remove, use a screw driver and a rubber mallet to lightly tap on the metal ring on the caster post to help loosen the caster from the base frame. (Note: 5" Total Lock Casters will be re-used in the rear of the chair)	
2	Position chair upside down. Place appropriate width/style mounting bracket over the side rails of the frame, approximately 2.5" from the front caster posts (shown in the pictures is a piece of plywood 2.5" wide to help accurately measure the mounting bracket and keeping it aligned straight. Keep the straight cross piece of the bracket towards the rear of the chair).	
3	Plug the end of the wheel lock mount assembly with the 1" black round plug. Install two 1/4"-20 x 1-3/4" long hex cap screws through the holes in a left wheel lock mount assembly and insert through the two holes located in the left side of the wheelchair mount.	



- 4** Place a wheelchair clamp around the inside of the lower side rail between the cross rails of the mounting bracket. Thread the hex cap screws into the clamp block. Finger tighten only at this time.



- 5** Plug the end of the wheel lock mount assembly with a 1" round black plug. Install two 1/4"-20 x 1-3/4" long hex cap screws through the holes in a right wheel lock mount assembly and insert through the two holes located in the right side of the wheelchair mount.



- 6** Place a wheelchair clamp around the inside of the lower side rail between the cross rails of the mounting bracket. Thread the hex cap screws into the clamp block. Finger tighten only at this time.



- 7** Evenly tighten the fasteners installed in steps 3 & 5 with a 7/16 wrench.

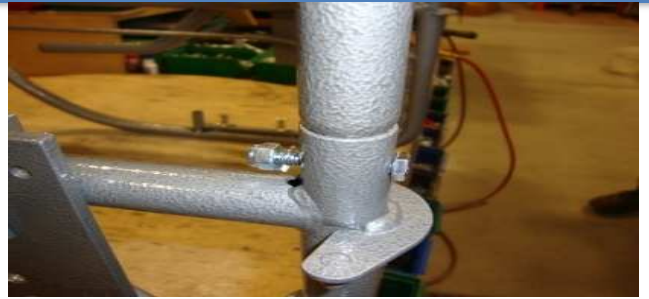


- 8** Install two front mount anti-tippers into the front caster sockets.





- 9** Secure anti tippers into the base using 1/4"-20 x 1-1/2" long hex cap screws, 1/4" split lock washers, and 1/4" nylon insert locknuts. (Heads of the cap screws face the front of the chair)



- 10** Install one 1-1/2" diameter black wheel into each of the forks located on the anti-tippers. Use axle kit to secure wheels in place.



- 11** Tighten fasteners installed in steps 9 & 10 with 7/16" wrenches.



- 12** Install two 5" total lock casters into the rear legs of the base. Secure casters into the base using 1/4"-20 x 1-1/2" long hex cap screws, 1/4" split lock washers, and 1/4" nylon insert locknuts. Tighten fasteners using 7/16" wrenches. (Heads of the cap screw face the rear of the chair)





- 13** Install a mag wheel sleeve into the bearings of appropriate diameter mag wheel. (Install through the bearings opposite of the hand rim on the wheel.)



- 14** Insert a 7/16"-14 x 3-1/2" long Hex Cap Screw in the appropriate axle hole (top hole for 24" mags, middle for 22" mags and bottom hole for 20" mag wheels) on the left side of the wheelchair mounting bracket. Check clearance between mag wheel and wheel lock mount, and add washers behind sleeve, if necessary.



- 15** With the hand rim facing the outside of the chair install the Mag wheel and sleeve from step 14 over the axle bolt installed in step 15, follow with a 7/16" flat washer & 7/16" nyloc nut.



- 16** Repeat steps 13, 14, 15 on the right hand side of chair. Tighten fasteners on steps 14 through 17 using 5/8" wrenches.

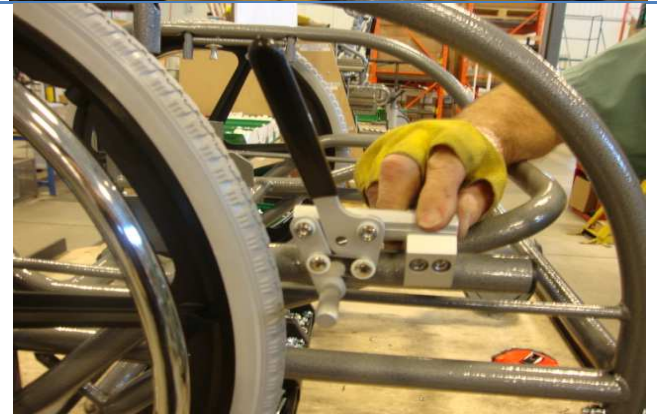




- 17** Turn base over onto it's wheels, install an aluminum wheel lock clamp onto the wheel lock mount installed in step 5 above. The socket cap screw on the clamp must face the outside of the chair frame.



- 18** Slide the proper wheel lock into the aluminum clamp. Position the wheel lock by placing it in an unlocked setting and sliding it towards the tire until the desired gap is achieved (approx. 13/16").



- 19** Once desired position is achieved, and keeping the wheel lock parallel with side rail of base frame, tighten the screws on the wheel lock clamp using a 5 mm hex key to clamp the lock onto the lock mount.



Step 18 - Picture # 2 Continued. (Note: test the wheel lock to ensure the desired amount of force is applied to the tire to put it in a lock position. The closer you mount the aluminum clamp, the tighter the wheel lock will engage )





- 20** Repeat step 17 to install the second aluminum clamp onto the wheel lock mount. The socket cap screw on the clamp must face the outside of the chair frame.



- 21** Repeat step 18, on the other side of the base frame.



Step 20 - Picture # 2 Continued. (Note: test the wheel lock to ensure the desired amount of force is applied to the tire to put it in a lock position. The closer you mount the aluminum clamp, the tighter the wheel lock will engage)



- 22** Repeat Step 19.



**For more information, please contact Broda Customer Care at 1-800-668-0637**